

Application

Extraction roof fans REX-V comply with the requirements of ATEX Directive 2014/34/UE, are designed for use in hazard zones excluding mines and mining pits, meets the requirements of group II category 2G/3G - zone 1 and/or 2 and category 2D/3D - zone 21 and/or 22.

ATEX marking:

II 2G Ex h IIB+H₂ T3 Gb

II 2G Ex h IIB+H₂ T4 Gb

II 2D Ex h IIIC T125°C Db

Construction

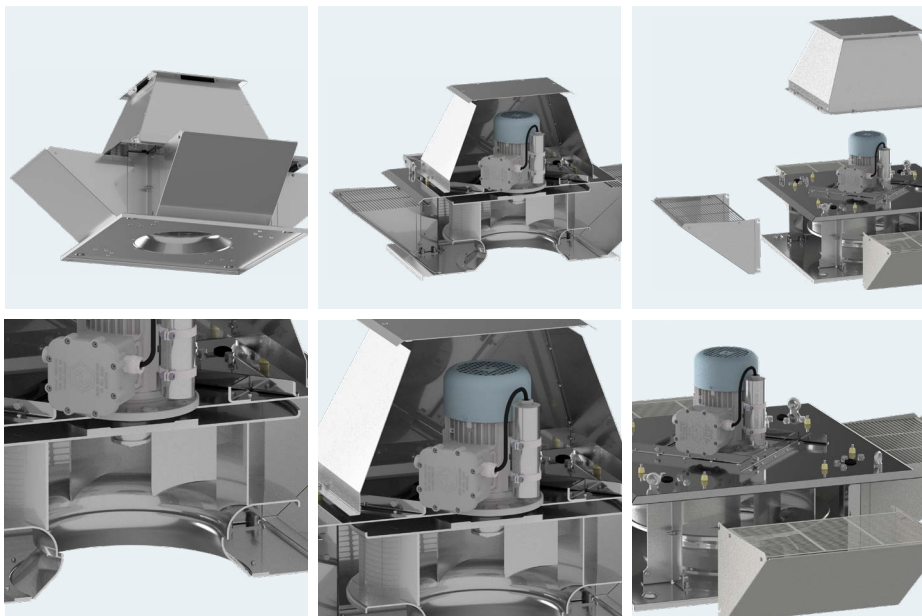
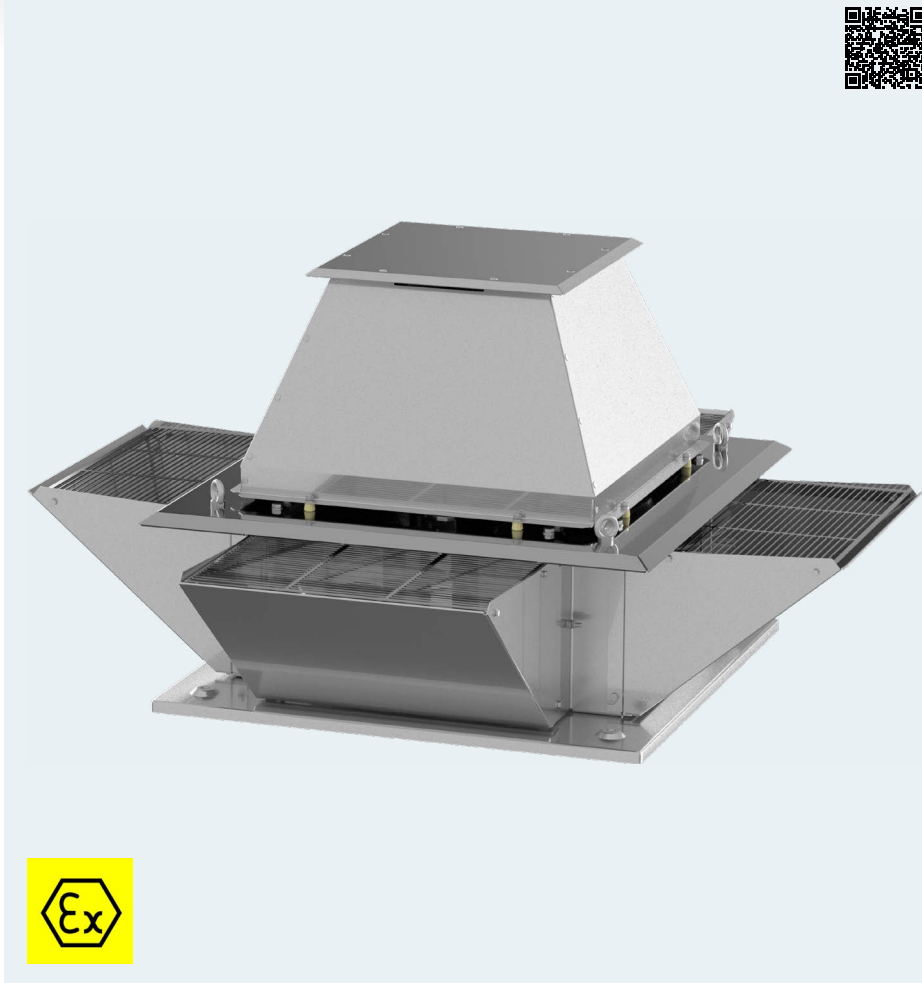
- medium- pressure centrifugal fan with direct drive
- aluminium sheet impeller with forward curved blades, dynamically balanced according to ISO 1940-1,
- casing parts made of unpainted aluminium and stainless steel sheet,
- temperature of the transported medium is the same as the ambient temperature of the device (see technical data),
- minimum ambient temperature is -20°C,
- suitable for mounting a vibration sensor.

Electric motor

- asynchronous, three-phase, 230/400V 50Hz or 400/690V 50Hz (depending on the model),
- insulation class F,
- thermal protection PTC,
- VFD models suitable for frequency regulation.

Special execution

- painted casing,
- different motor voltage and frequency,
- different motor degree of protection,
- impeller and casing made of stainless steel sheet,
- ambient temperature up to +60°C.

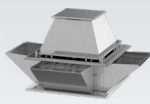


RELATED PRODUCTS



REX-H
Roof fan
with horizontal
discharge



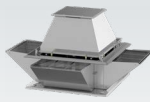


NOMINAL DATA

type	airflow max	pressure max	speed	voltage rated	current max abs.**	power motor	sound pressure level*	temp. medium min / max	temp. ambient min / max	weight	article number
2-POLE MOTORS											
REX-V/2-190-012T 2G	730 m ³ /h	340 Pa	2 750 rpm	400 V	0,4 A	120 W	67 dB(A)	-20 / 40 °C	-20 / 40 °C	12,5 kg	425526200
REX-V/2-190-012T 2G VFD	730 m ³ /h	340 Pa	2 800 rpm	400 V	0,48 A	120 W	67 dB(A)	-20 / 50 °C	-20 / 50 °C	14,5 kg	425526201
REX-V/2-190-012T 2GD VFD	730 m ³ /h	340 Pa	2 800 rpm	400 V	0,48 A	120 W	67 dB(A)	-20 / 50 °C	-20 / 50 °C	14,5 kg	425526202
REX-V/2-220-018T 2G	1020 m ³ /h	435 Pa	2 820 rpm	400 V	0,4 A	180 W	68 dB(A)	-20 / 40 °C	-20 / 40 °C	12,5 kg	425526210-01
REX-V/2-220-018T 2G VFD	1020 m ³ /h	435 Pa	2 800 rpm	400 V	0,48 A	180 W	68 dB(A)	-20 / 50 °C	-20 / 50 °C	14,5 kg	425526211-01
REX-V/2-220-018T 2GD VFD	1020 m ³ /h	435 Pa	2 800 rpm	400 V	0,48 A	180 W	68 dB(A)	-20 / 50 °C	-20 / 50 °C	14,5 kg	425526212-01
REX-V/2-280(250)-025T 2G	1745 m ³ /h	630 Pa	2 870 rpm	400 V	0,9 A	250 W	71 dB(A)	-20 / 40 °C	-20 / 40 °C	16,0 kg	425526220
REX-V/2-280(250)-025T 2G VFD	1745 m ³ /h	630 Pa	2 830 rpm	400 V	0,81 A	250 W	71 dB(A)	-20 / 50 °C	-20 / 50 °C	18,0 kg	425526221
REX-V/2-280(250)-025T 2GD VFD	1745 m ³ /h	630 Pa	2 830 rpm	400 V	0,81 A	250 W	71 dB(A)	-20 / 50 °C	-20 / 50 °C	18,0 kg	425526222
4-POLE MOTORS											
REX-V/4-190-006T 2G	360 m ³ /h	80 Pa	1 380 rpm	400 V	0,31 A	60 W	52 dB(A)	-20 / 40 °C	-20 / 40 °C	12,5 kg	45526400
REX-V/4-190-012T 2G VFD	360 m ³ /h	80 Pa	1 390 rpm	400 V	0,49 A	120 W	52 dB(A)	-20 / 50 °C	-20 / 50 °C	15,0 kg	425526401
REX-V/4-190-012T 2GD VFD	360 m ³ /h	80 Pa	1 390 rpm	400 V	0,49 A	120 W	52 dB(A)	-20 / 50 °C	-20 / 50 °C	15,0 kg	425526402
REX-V/4-220-006T 2G	500 m ³ /h	105 Pa	1 380 rpm	400 V	0,31 A	60 W	53 dB(A)	-20 / 40 °C	-20 / 40 °C	12,5 kg	45526410
REX-V/4-220-012T 2G VFD	500 m ³ /h	105 Pa	1 390 rpm	400 V	0,49 A	120 W	53 dB(A)	-20 / 50 °C	-20 / 50 °C	15,0 kg	425526411
REX-V/4-220-012T 2GD VFD	500 m ³ /h	105 Pa	1 390 rpm	400 V	0,49 A	120 W	53 dB(A)	-20 / 50 °C	-20 / 50 °C	15,0 kg	425526412
REX-V/4-250-018T 2G	1100 m ³ /h	180 Pa	1 380 rpm	400 V	0,55 A	180 W	53 dB(A)	-20 / 40 °C	-20 / 40 °C	16,5 kg	425526420
REX-V/4-250-018T 2G VFD	1100 m ³ /h	180 Pa	1 340 rpm	400 V	0,57 A	180 W	53 dB(A)	-20 / 50 °C	-20 / 50 °C	17,5 kg	425526421
REX-V/4-250-018T 2GD VFD	1100 m ³ /h	180 Pa	1 340 rpm	400 V	0,57 A	180 W	53 dB(A)	-20 / 50 °C	-20 / 50 °C	17,5 kg	425526422
REX-V/4-280-025T 2G	1570 m ³ /h	230 Pa	1 410 rpm	400 V	0,85 A	250 W	56 dB(A)	-20 / 40 °C	-20 / 40 °C	18,0 kg	425526420
REX-V/4-280-025T 2G VFD	1570 m ³ /h	230 Pa	1 430 rpm	400 V	0,79 A	250 W	56 dB(A)	-20 / 50 °C	-20 / 50 °C	20,0 kg	425526431
REX-V/4-280-025T 2GD VFD	1570 m ³ /h	230 Pa	1 430 rpm	400 V	0,79 A	250 W	56 dB(A)	-20 / 50 °C	-20 / 50 °C	20,0 kg	425526432
REX-V/4-315-037T 2G	2 210 m ³ /h	290 Pa	1 410 rpm	400 V	1,15 A	370 W	59 dB(A)	-20 / 40 °C	-20 / 40 °C	25,5 kg	425526440
REX-V/4-315-037T 2G VFD	2 210 m ³ /h	290 Pa	1 420 rpm	400 V	1,08 A	370 W	59 dB(A)	-20 / 50 °C	-20 / 50 °C	26,6 kg	425526441
REX-V/4-315-037T 2GD VFD	2 210 m ³ /h	290 Pa	1 420 rpm	400 V	1,08 A	370 W	59 dB(A)	-20 / 50 °C	-20 / 50 °C	25,5 kg	425526442
REX-V/4-355-055T 2G	3 130 m ³ /h	375 Pa	1 420 rpm	400 V	1,5 A	550 W	62 dB(A)	-20 / 40 °C	-20 / 40 °C	32,5 kg	425526450
REX-V/4-355-055T 2G VFD	3 130 m ³ /h	375 Pa	1 440 rpm	400 V	1,32 A	550 W	62 dB(A)	-20 / 50 °C	-20 / 50 °C	35,0 kg	425526451
REX-V/4-355-055T 2GD VFD	3 130 m ³ /h	375 Pa	1 440 rpm	400 V	1,32 A	550 W	62 dB(A)	-20 / 50 °C	-20 / 50 °C	35,0 kg	425526452
REX-V/4-400-075T 2G	4 600 m ³ /h	475 Pa	1 430 rpm	400 V	2,1 A	750 W	65 dB(A)	-20 / 40 °C	-20 / 40 °C	41,0 kg	435526460
REX-V/4-400-075T 2G VFD	4 600 m ³ /h	475 Pa	1 445 rpm	400 V	1,85 A	750 W	65 dB(A)	-20 / 50 °C	-20 / 50 °C	45,0 kg	435526461
REX-V/4-400-075T 2GD VFD	4 600 m ³ /h	475 Pa	1 445 rpm	400 V	1,85 A	750 W	65 dB(A)	-20 / 50 °C	-20 / 50 °C	45,0 kg	435526462
REX-V/4-450-110T 2G	6 540 m ³ /h	620 Pa	1 450 rpm	400 V	2,5 A	1 100 W	68 dB(A)	-20 / 40 °C	-20 / 40 °C	53,5 kg	435526470
REX-V/4-450-110T 2G VFD	6 540 m ³ /h	620 Pa	1 440 rpm	400 V	2,61 A	1 100 W	68 dB(A)	-20 / 50 °C	-20 / 50 °C	56,5 kg	435526471
REX-V/4-450-110T 2GD VFD	6 540 m ³ /h	620 Pa	1 440 rpm	400 V	2,61 A	1 100 W	68 dB(A)	-20 / 50 °C	-20 / 50 °C	56,5 kg	435526472
REX-V/4-500-220T 2G	8 940 m ³ /h	740 Pa	1 465 rpm	400 V	4,6 A	2 200 W	71 dB(A)	-20 / 40 °C	-20 / 40 °C	70,5 kg	435526480
REX-V/4-500-220T 2G VFD	8 940 m ³ /h	740 Pa	1 440 rpm	400 V	4,9 A	2 200 W	71 dB(A)	-20 / 50 °C	-20 / 50 °C	74,5 kg	435526481
REX-V/4-500-220T 2GD VFD	8 940 m ³ /h	740 Pa	1 440 rpm	400 V	4,9 A	2 200 W	71 dB(A)	-20 / 50 °C	-20 / 50 °C	74,5 kg	435526482
REX-V/4-560-300T 2G	12 530 m ³ /h	920 Pa	1 465 rpm	400 V	6,3 A	3 000 W	75 dB(A)	-20 / 40 °C	-20 / 40 °C	81,0 kg	435526490
REX-V/4-560-300T 2G VFD	12 530 m ³ /h	920 Pa	1 455 rpm	400 V	6,05 A	3 000 W	75 dB(A)	-20 / 50 °C	-20 / 50 °C	91,0 kg	435526491
REX-V/4-560-300T 2GD VFD	12 530 m ³ /h	920 Pa	1 455 rpm	400 V	6,05 A	3 000 W	75 dB(A)	-20 / 50 °C	-20 / 50 °C	91,0 kg	435526492

* Measurement made at a distance of 1.5m from the outlet, for Q = 2/3 * Qmax

** the value of the rated current may vary depending on the manufacturer of the electric motor used.

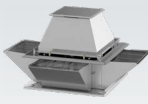


NOMINAL DATA

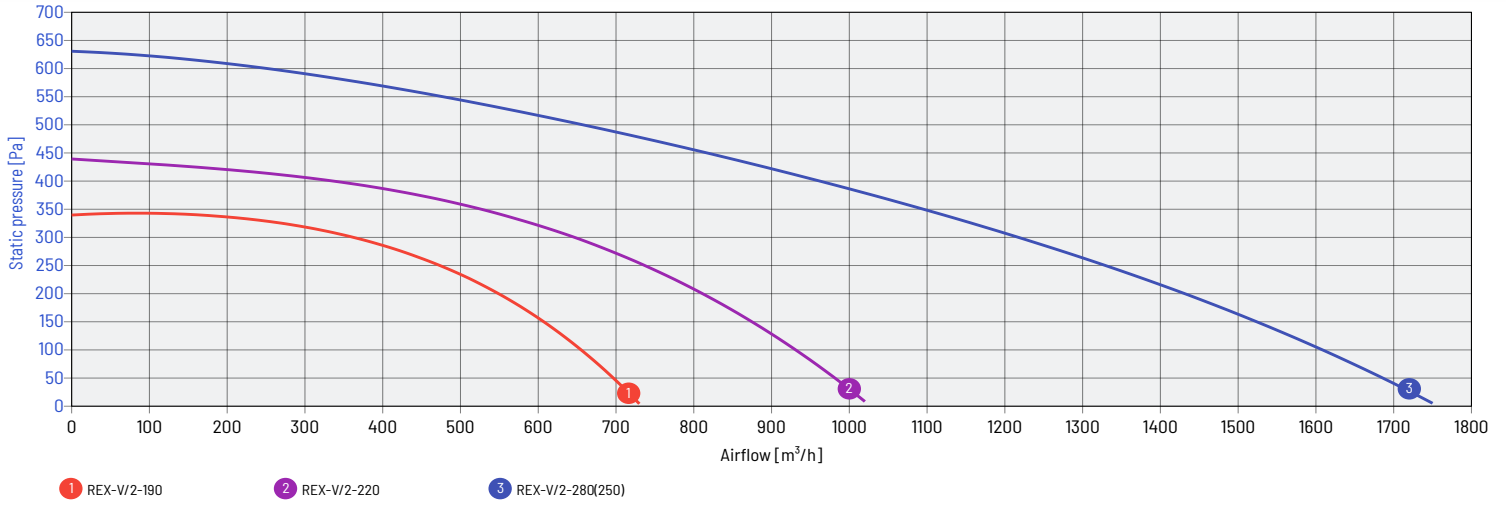
type	airflow max	pressure max	speed	voltage rated	current max abs.**	power motor	sound pressure level*	temp. medium min / max	temp. ambient min / max	weight	article number
6-POLE MOTORS											
REX-V/6-250-018T 2G	725 m ³ /h	75 Pa	910 rpm	400 V	0,65 A	180 W	50 dB(A)	-20 / 40 °C	-20 / 40 °C	17,0 kg	425526620
REX-V/6-250-012T 2G VFD	725 m ³ /h	75 Pa	935 rpm	400 V	0,59 A	120 W	50 dB(A)	-20 / 50 °C	-20 / 50 °C	18,5 kg	425526621
REX-V/6-250-012T 2GD VFD	725 m ³ /h	75 Pa	935 rpm	400 V	0,59 A	120 W	50 dB(A)	-20 / 50 °C	-20 / 50 °C	18,5 kg	425526622
REX-V/6-280-018T 2G	1 025 m ³ /h	100 Pa	910 rpm	400 V	0,65 A	180 W	53 dB(A)	-20 / 40 °C	-20 / 40 °C	18,0 kg	425526630
REX-V/6-280-012T 2G VFD	1 025 m ³ /h	100 Pa	935 rpm	400 V	0,59 A	120 W	53 dB(A)	-20 / 50 °C	-20 / 50 °C	19,0 kg	425526631
REX-V/6-280-012T 2GD VFD	1 025 m ³ /h	100 Pa	935 rpm	400 V	0,59 A	120 W	53 dB(A)	-20 / 50 °C	-20 / 50 °C	19,0 kg	425526632
REX-V/6-315-018T 2G	1 450 m ³ /h	125 Pa	910 rpm	400 V	0,65 A	180 W	56 dB(A)	-20 / 40 °C	-20 / 40 °C	24,5 kg	425526640
REX-V/6-315-012T 2G VFD	1 450 m ³ /h	125 Pa	935 rpm	400 V	0,59 A	120 W	56 dB(A)	-20 / 50 °C	-20 / 50 °C	25,5 kg	425526641
REX-V/6-315-012T 2GD VFD	1 450 m ³ /h	125 Pa	935 rpm	400 V	0,59 A	120 W	56 dB(A)	-20 / 50 °C	-20 / 50 °C	25,5 kg	425526642
REX-V/6-355-018T 2G	2 050 m ³ /h	160 Pa	910 rpm	400 V	0,65 A	180 W	59 dB(A)	-20 / 40 °C	-20 / 40 °C	30,0 kg	425526650
REX-V/6-355-018T 2G VFD	2 050 m ³ /h	160 Pa	925 rpm	400 V	0,82 A	180 W	59 dB(A)	-20 / 50 °C	-20 / 50 °C	32,0 kg	425526651
REX-V/6-355-018T 2GD VFD	2 050 m ³ /h	160 Pa	925 rpm	400 V	0,82 A	180 W	59 dB(A)	-20 / 50 °C	-20 / 50 °C	32,0 kg	425526652
REX-V/6-400-025T 2G	3 020 m ³ /h	205 Pa	910 rpm	400 V	0,9 A	250 W	62 dB(A)	-20 / 40 °C	-20 / 40 °C	38,0 kg	425526660
REX-V/6-400-025T 2G VFD	3 020 m ³ /h	205 Pa	930 rpm	400 V	0,88 A	250 W	62 dB(A)	-20 / 50 °C	-20 / 50 °C	40,0 kg	425526661
REX-V/6-400-025T 2GD VFD	3 020 m ³ /h	205 Pa	930 rpm	400 V	0,88 A	250 W	62 dB(A)	-20 / 50 °C	-20 / 50 °C	40,0 kg	425526662
REX-V/6-450-037T 2G	4 290 m ³ /h	270 Pa	920 rpm	400 V	1 A	370 W	65 dB(A)	-20 / 40 °C	-20 / 40 °C	48,5 kg	425526670
REX-V/6-450-037T 2G VFD	4 290 m ³ /h	270 Pa	945 rpm	400 V	1,05 A	370 W	65 dB(A)	-20 / 50 °C	-20 / 50 °C	51,5 kg	425526671
REX-V/6-450-037T 2GD VFD	4 290 m ³ /h	270 Pa	945 rpm	400 V	1,05 A	370 W	65 dB(A)	-20 / 50 °C	-20 / 50 °C	51,5 kg	425526672
REX-V/6-500-075T 2G	5 860 m ³ /h	320 Pa	940 rpm	400 V	2 A	750 W	68 dB(A)	-20 / 40 °C	-20 / 40 °C	66,0 kg	435526680
REX-V/6-500-075T 2G VFD	5 860 m ³ /h	320 Pa	945 rpm	400 V	1,96 A	750 W	68 dB(A)	-20 / 50 °C	-20 / 50 °C	66,0 kg	435526681
REX-V/6-500-075T 2GD VFD	5 860 m ³ /h	320 Pa	945 rpm	400 V	1,96 A	750 W	68 dB(A)	-20 / 50 °C	-20 / 50 °C	66,0 kg	435526682
REX-V/6-560-110T 2G	8 210 m ³ /h	400 Pa	940 rpm	400 V	2,8 A	1 100 W	72 dB(A)	-20 / 40 °C	-20 / 40 °C	73,0 kg	435526690
REX-V/6-560-110T 2G VFD	8 210 m ³ /h	400 Pa	950 rpm	400 V	2,7 A	1 100 W	72 dB(A)	-20 / 50 °C	-20 / 50 °C	79,0 kg	435526691
REX-V/6-560-110T 2GD VFD	8 210 m ³ /h	400 Pa	950 rpm	400 V	2,7 A	1 100 W	72 dB(A)	-20 / 50 °C	-20 / 50 °C	79,0 kg	435526692
REX-V/6-630-220T 2G	11 890 m ³ /h	520 Pa	965 rpm	400 V	5 A	2 200 W	76 dB(A)	-20 / 40 °C	-20 / 40 °C	122,0 kg	435526700
REX-V/6-630-220T 2G VFD	11 890 m ³ /h	520 Pa	955 rpm	400 V	5,2 A	2 200 W	76 dB(A)	-20 / 50 °C	-20 / 50 °C	133,0 kg	435526701
REX-V/6-630-220T 2GD VFD	11 890 m ³ /h	520 Pa	955 rpm	400 V	5,2 A	2 200 W	76 dB(A)	-20 / 50 °C	-20 / 50 °C	133,0 kg	435526702
REX-V/6-710-300T 2G	16 960 m ³ /h	660 Pa	965 rpm	400 V	6,2 A	3 000 W	80 dB(A)	-20 / 40 °C	-20 / 40 °C	165,0 kg	435526710
REX-V/6-710-300T 2G VFD	16 960 m ³ /h	660 Pa	965 rpm	400 V	6,32 A	3 000 W	80 dB(A)	-20 / 50 °C	-20 / 50 °C	160,0 kg	435526711
REX-V/6-710-300T 2GD VFD	16 960 m ³ /h	660 Pa	965 rpm	400 V	6,32 A	3 000 W	80 dB(A)	-20 / 50 °C	-20 / 50 °C	160,0 kg	435526712
REX-V/6-800-550T 2G	25 220 m ³ /h	875 Pa	960 rpm	400 V	11,1 A	5 500 W	84 dB(A)	-20 / 40 °C	-20 / 40 °C	228,0 kg	435526720
REX-V/6-800-550T 2G VFD	25 220 m ³ /h	875 Pa	970 rpm	400 V	11,4 A	5 500 W	84 dB(A)	-20 / 50 °C	-20 / 50 °C	260,0 kg	435526721
REX-V/6-800-550T 2GD VFD	25 220 m ³ /h	875 Pa	970 rpm	400 V	11,4 A	5 500 W	84 dB(A)	-20 / 50 °C	-20 / 50 °C	260,0 kg	435526722

* Measurement made at a distance of 1.5m from the outlet, for Q = 2/3 * Qmax

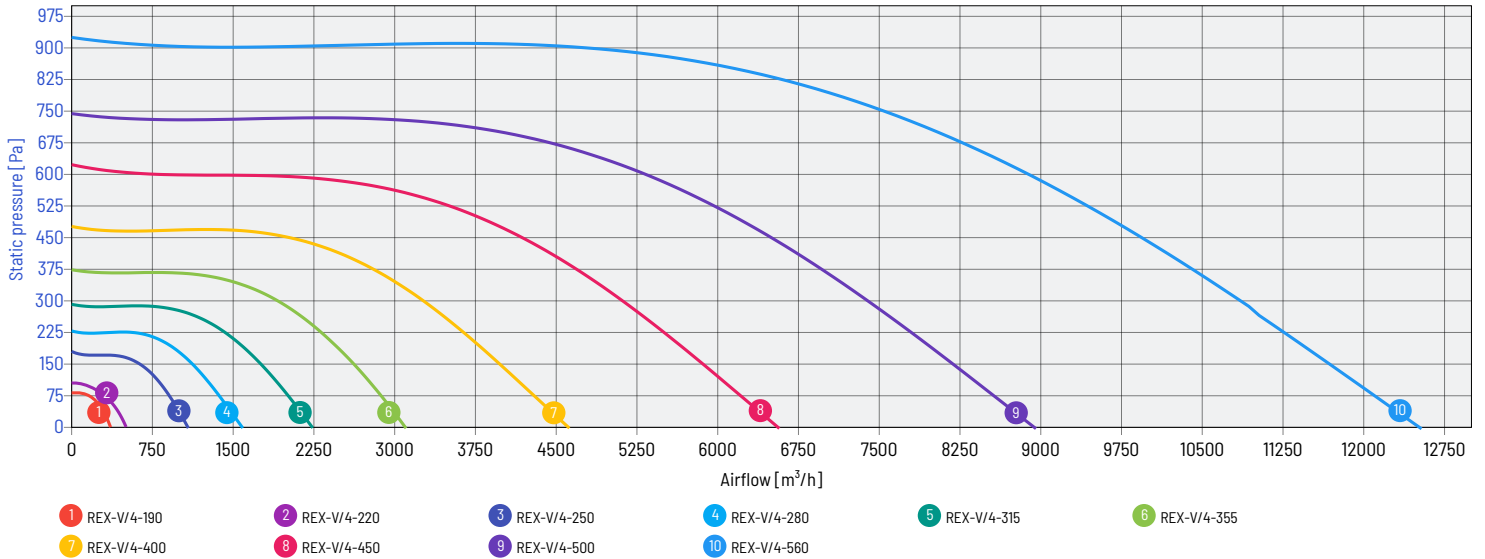
** the value of the rated current may vary depending on the manufacturer of the electric motor used.



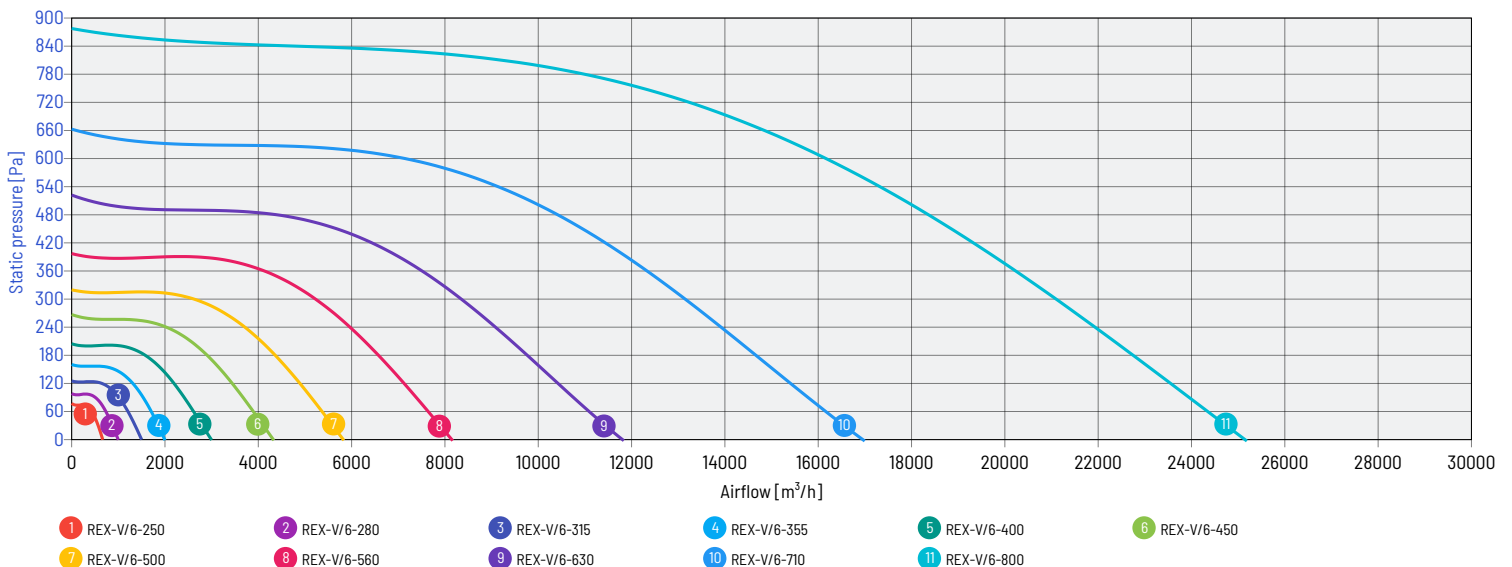
PERFORMANCE CHARACTERISTICS OF THE FANS - 2-POLE MOTORS 3000RPM

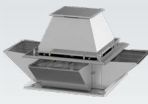


PERFORMANCE CHARACTERISTICS OF THE FANS - 4-POLE MOTORS 1500RPM

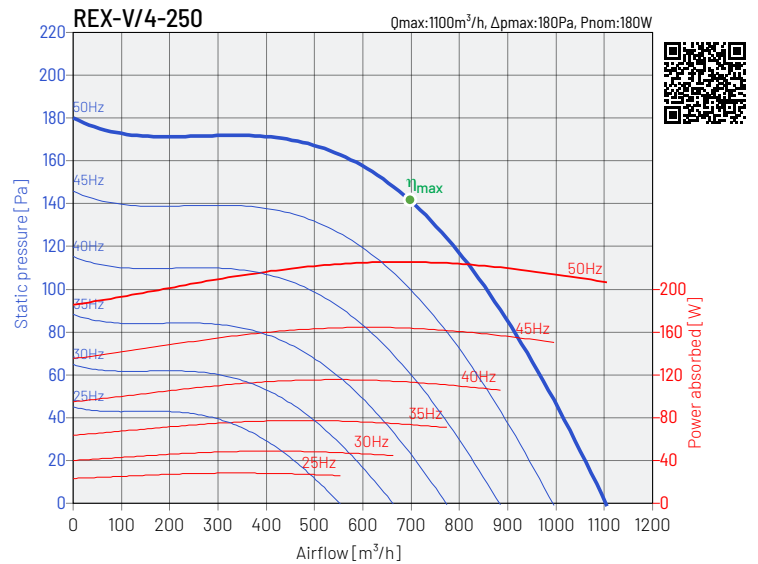
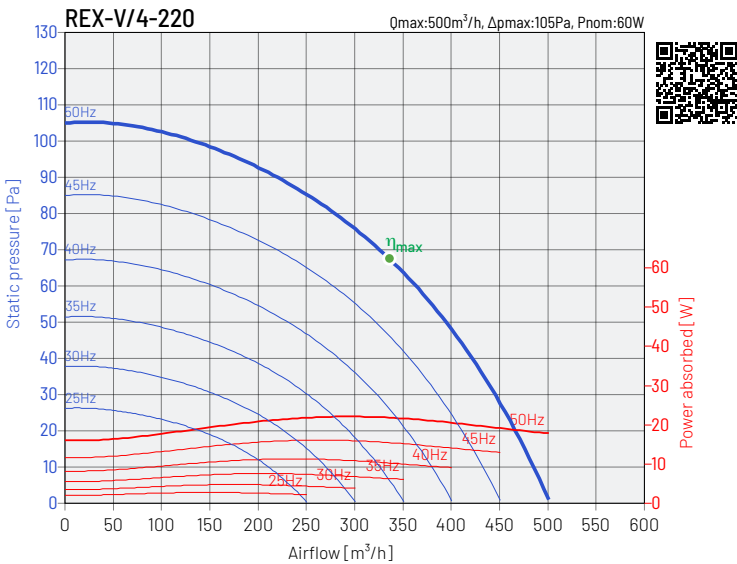
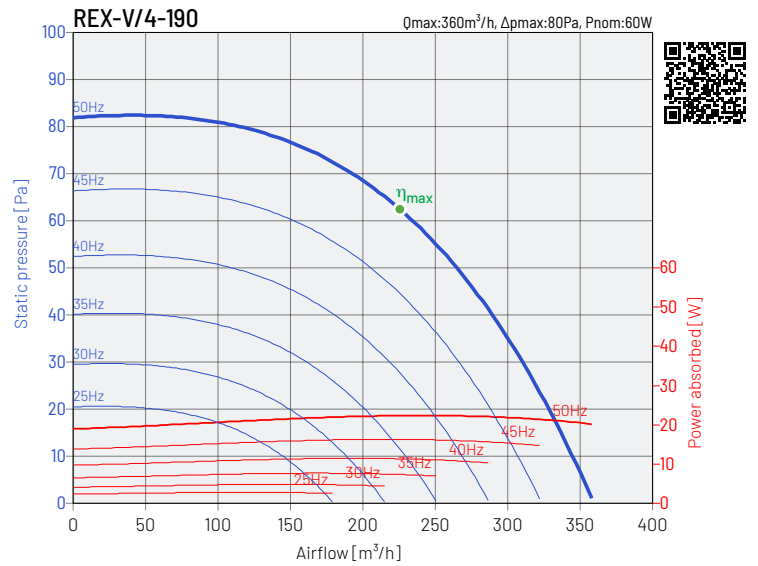
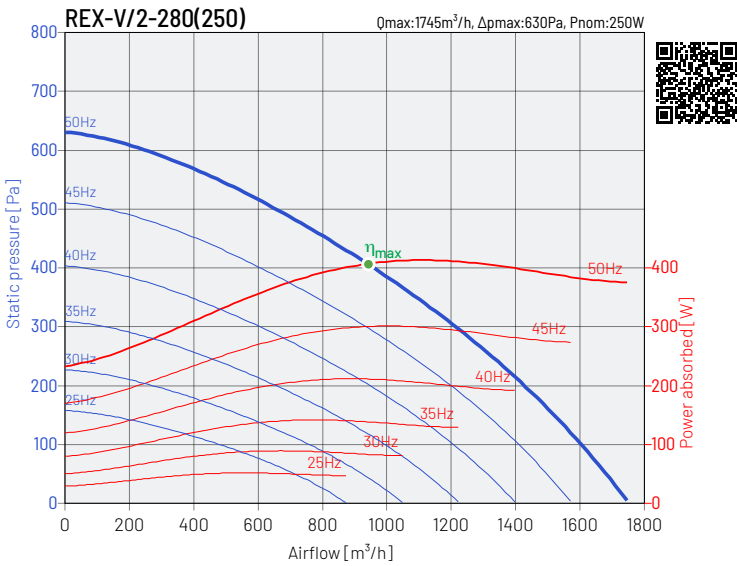
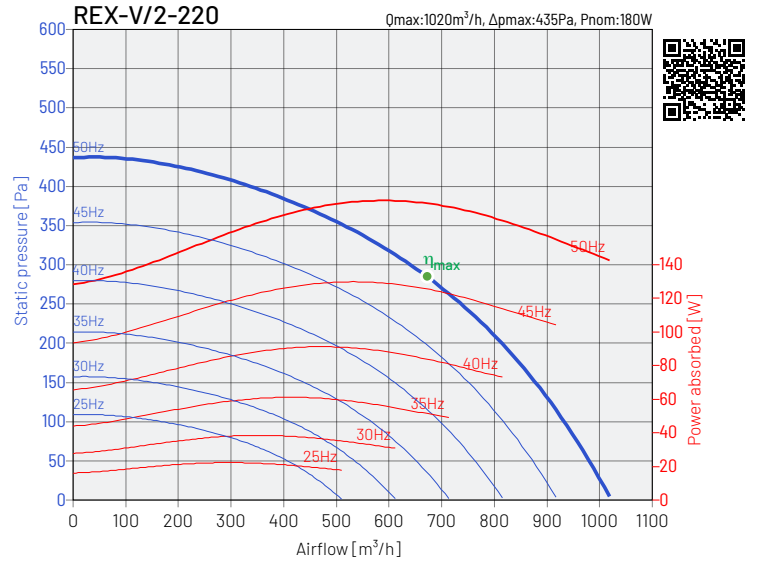
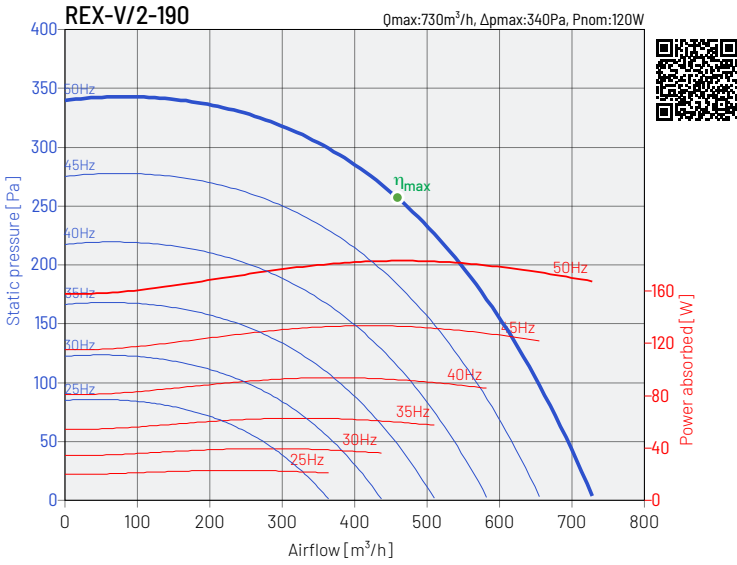


PERFORMANCE CHARACTERISTICS OF THE FANS - 6-POLE MOTORS 1000RPM



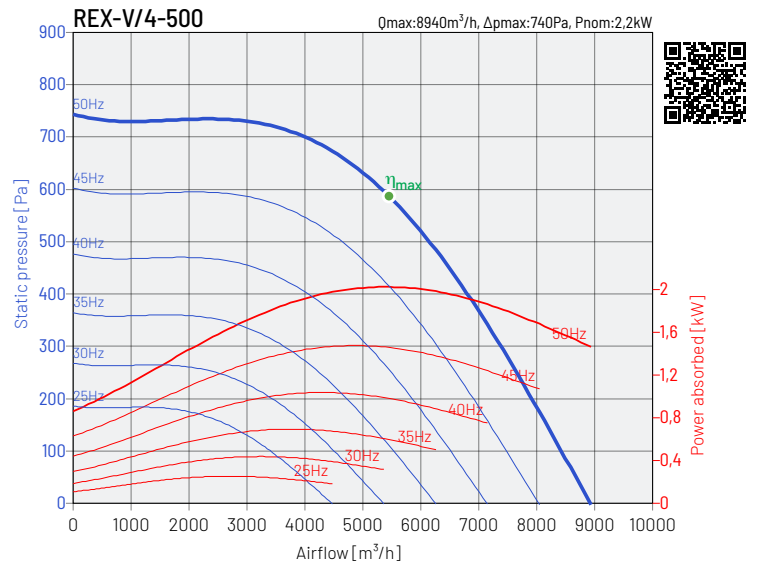
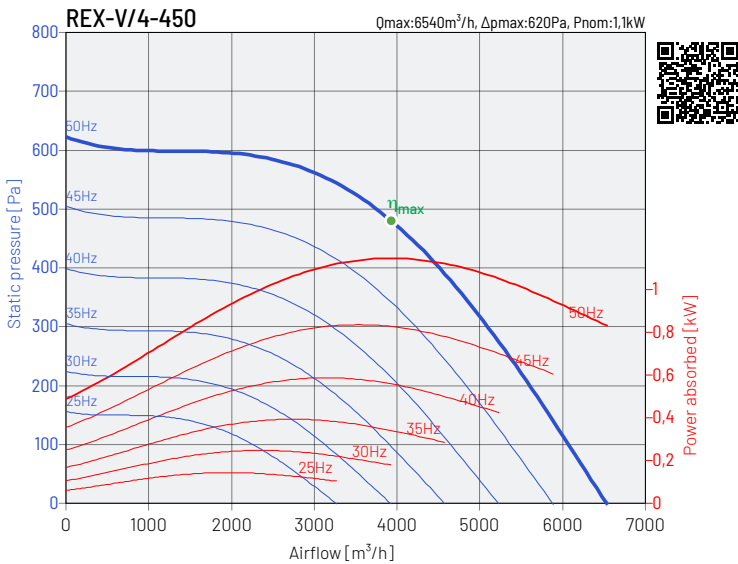
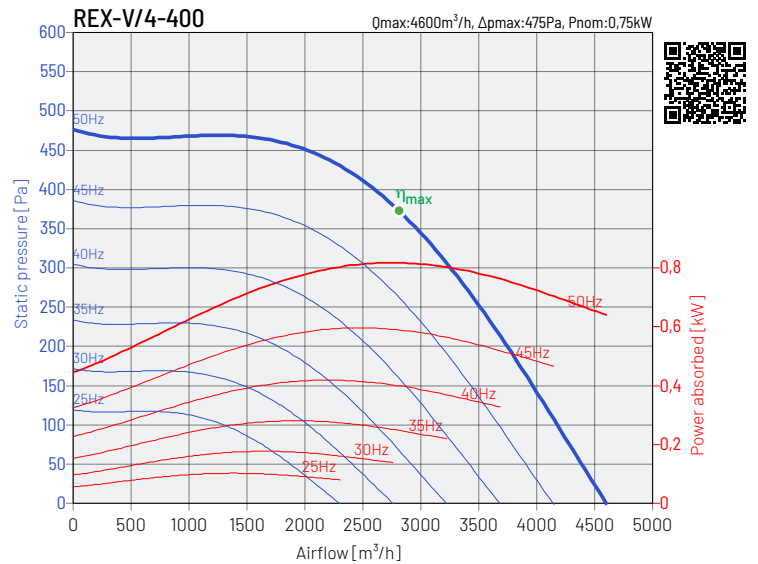
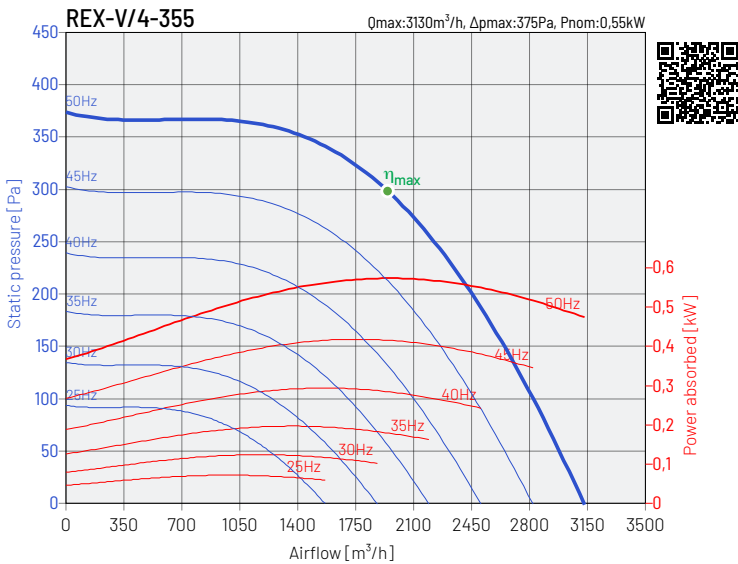
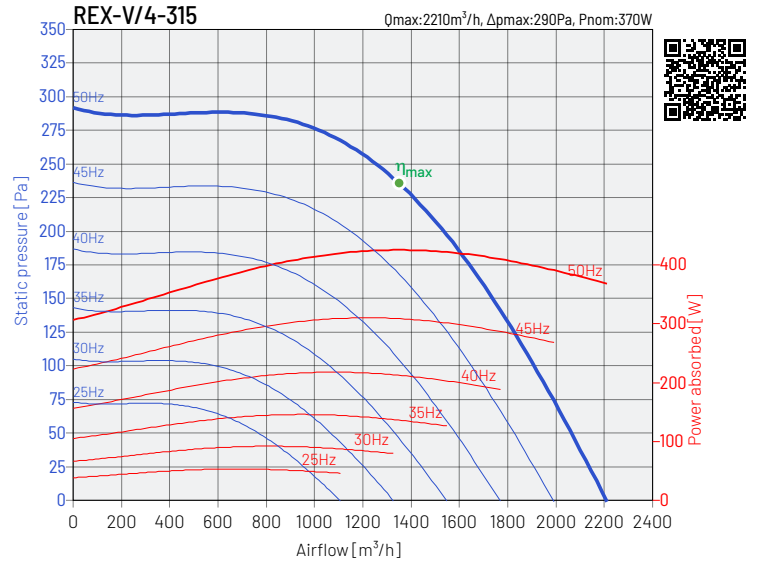
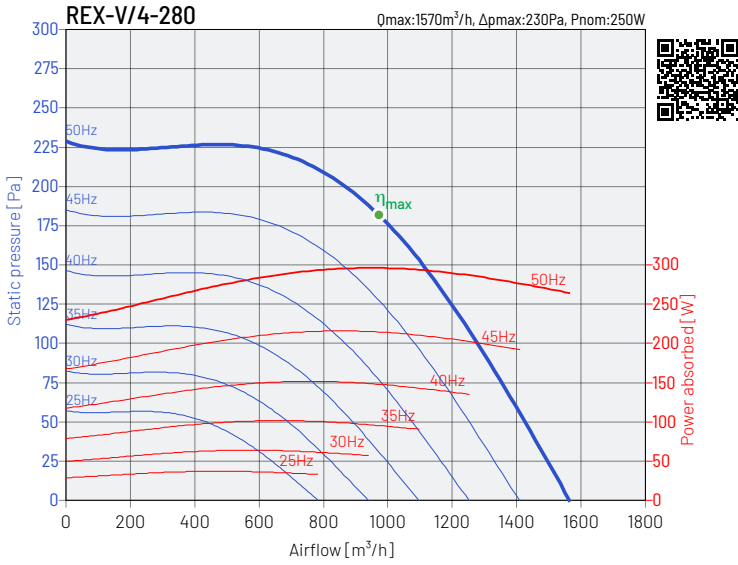


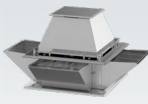
PERFORMANCE CHARACTERISTICS OF THE FANS



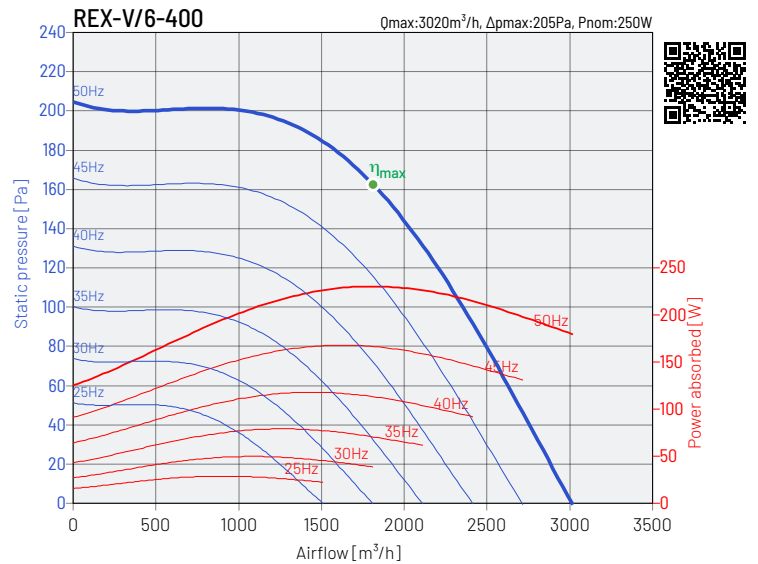
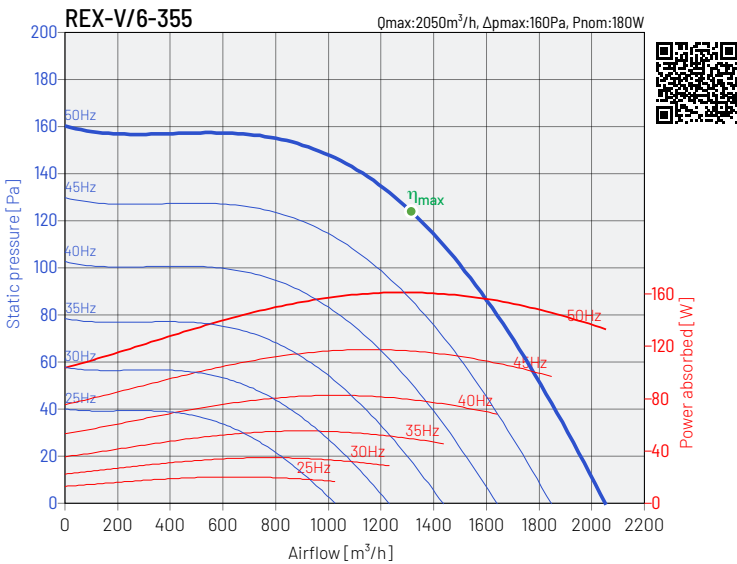
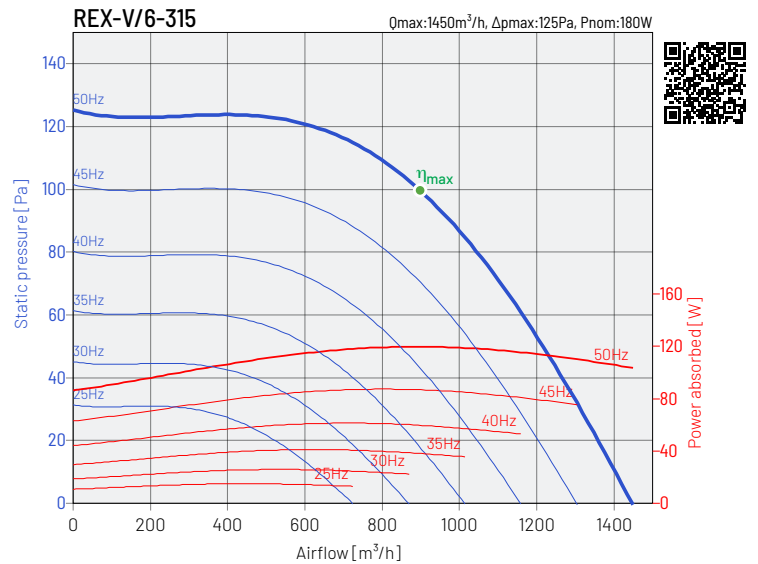
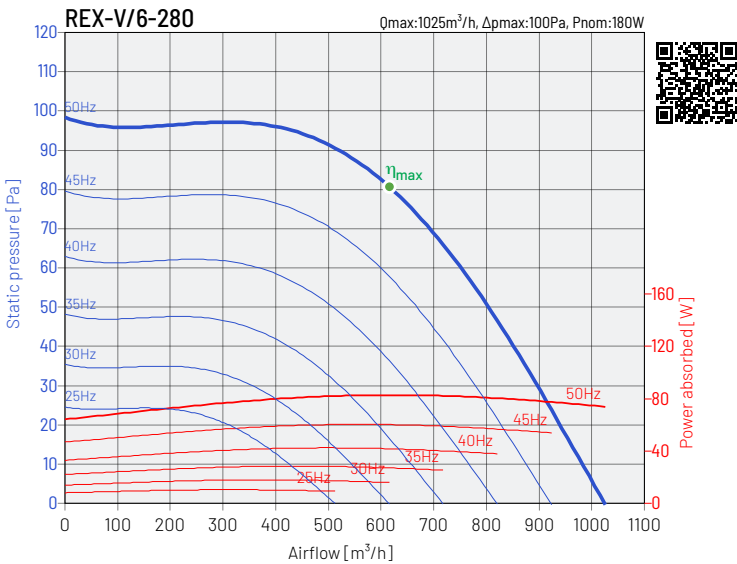
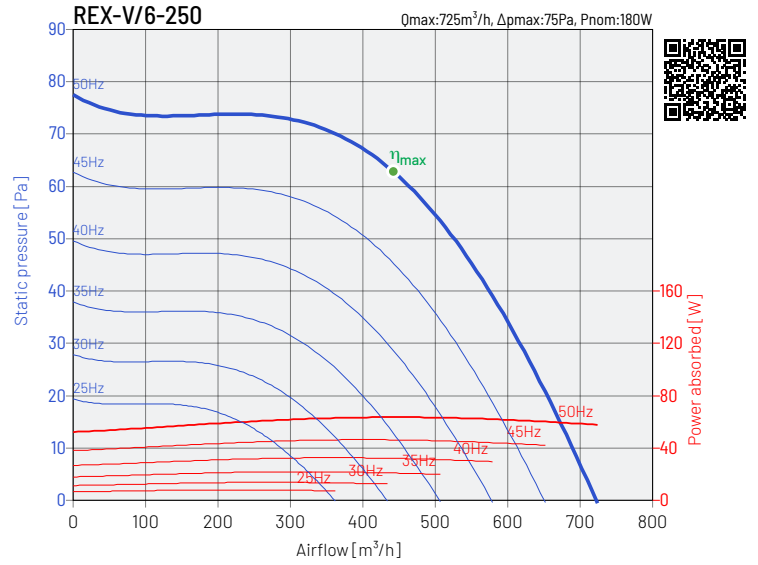
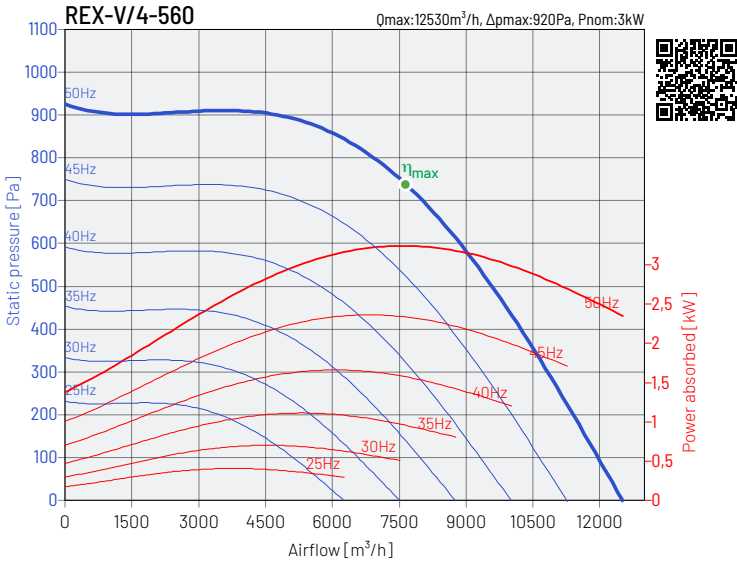


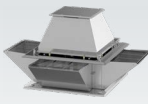
PERFORMANCE CHARACTERISTICS OF THE FANS



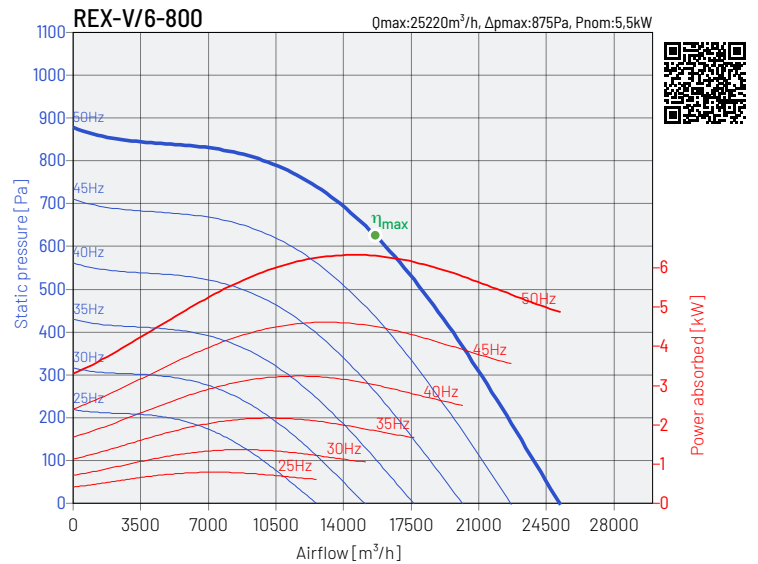
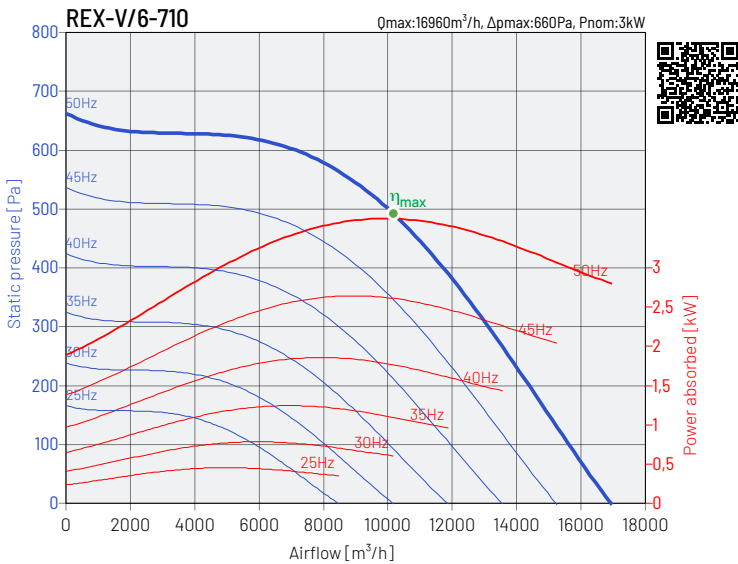
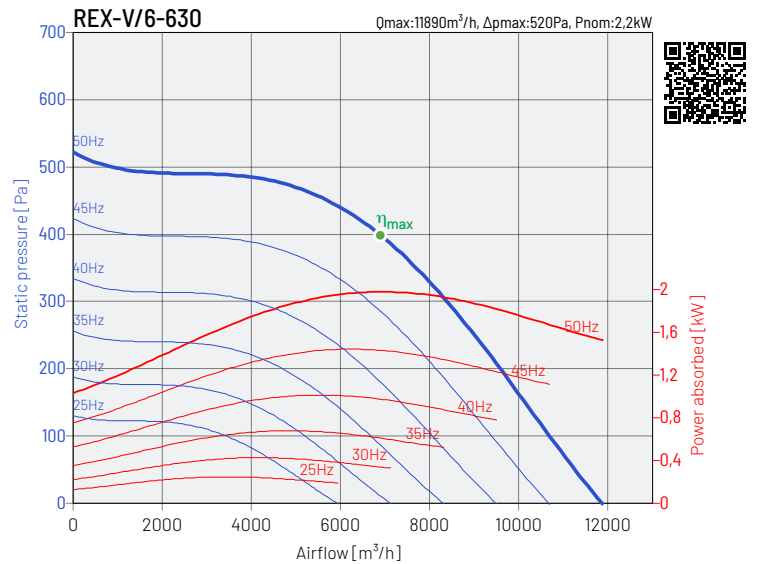
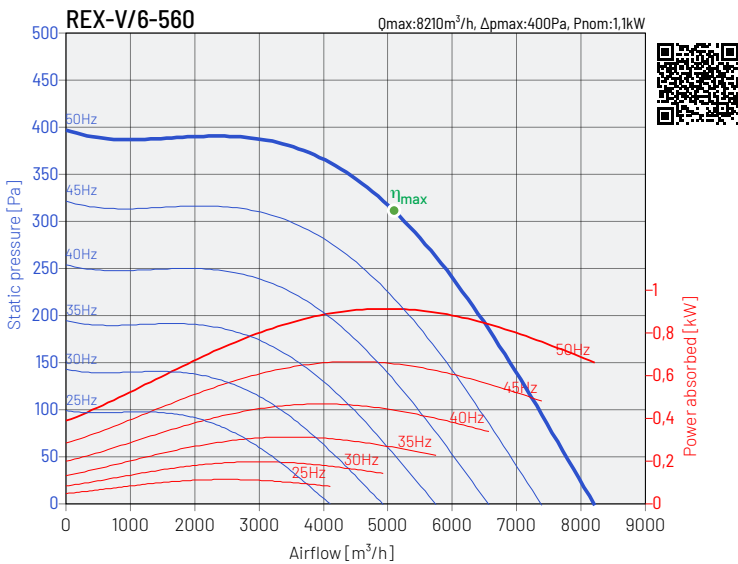
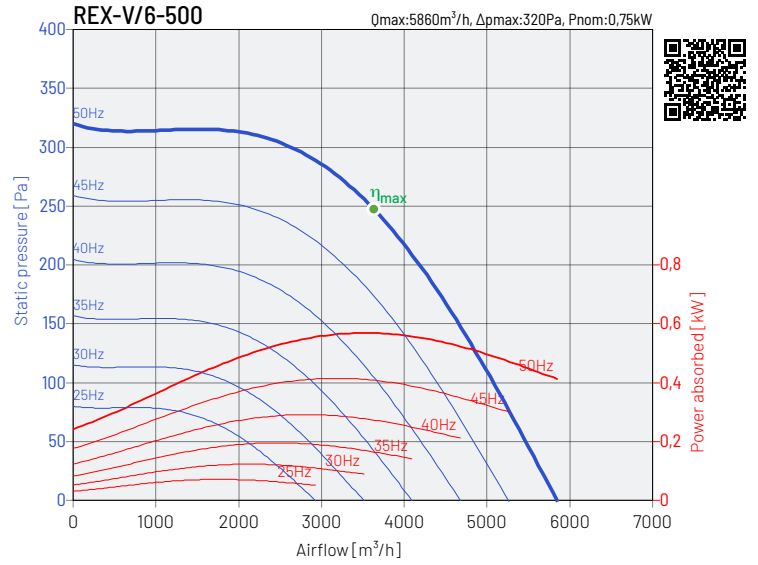
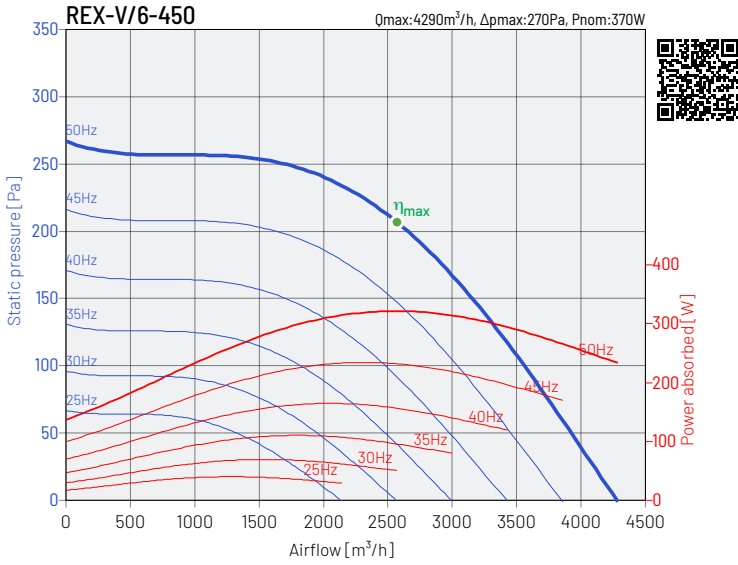


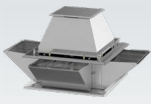
PERFORMANCE CHARACTERISTICS OF THE FANS



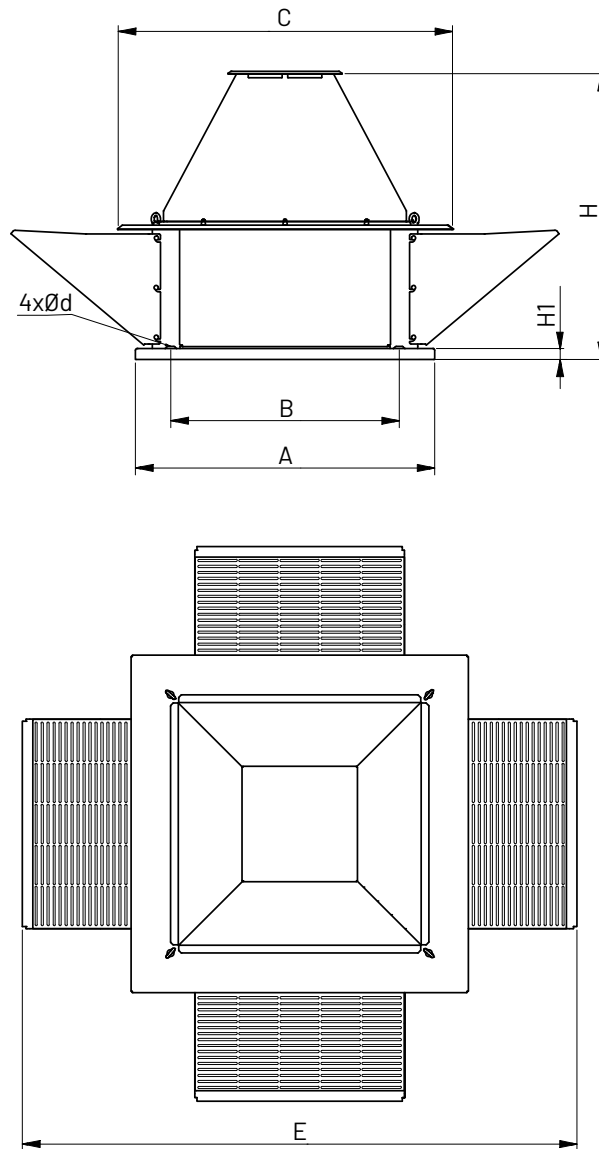


PERFORMANCE CHARACTERISTICS OF THE FANS



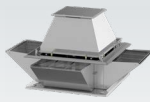


DIMENSIONS



type	A mm	B mm	C mm	Ød mm	E mm	H mm	H1 mm
REX-x-190	435	330	386	12	593	385	15
REX-x-220	435	330	386	12	593	385	15
REX-x-250	435	330	441	12	735	459	15
REX-2-280	435	330	441	12	637	416	15
REX-4/6-280	435	330	441	12	735	464	15
REX-x-315	560	450	513	12	833	495	15
REX-x-355	560	450	583	12	952	540	15

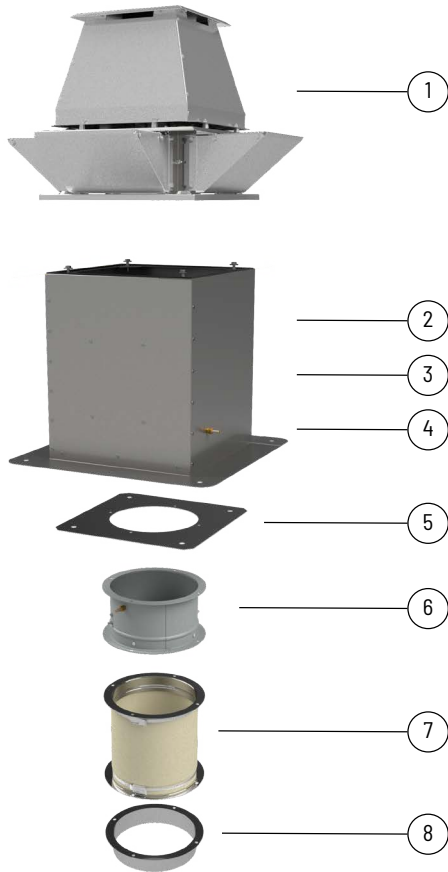
type	A mm	B mm	C mm	Ød mm	E mm	H mm	H1 mm
REX-x-400	560	450	653	12	1045	564	15
REX-x-450	710	590	731	12	1212	603	15
REX-x-500	710	590	811	12	1343	707	15
REX-x-560	710	590	896	12	1520	781	15
REX-x-630	900	750	1001	14	1604	816	40
REX-x-710	900	750	1121	14	1782	885	40
REX-x-800	1100	840	1241	14	2040	1060	40



MOUNTING ACCESSORIES



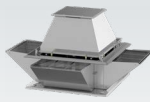
1	2	3	4	5
type	flat roof up RSS/EX	flat roof up RS/EX	flat roof up RSA/EX	mounting plate P/EX
REX-V/x-190	RSS/EX-435	RS/EX-435	RSA/EX-435	P/EX-435
REX-V/x-220	RSS/EX-435	RS/EX-435	RSA/EX-435	P/EX-435
REX-V/x-250	RSS/EX-435	RS/EX-435	RSA/EX-435	P/EX-435
REX-V/x-280	RSS/EX-435	RS/EX-435	RSA/EX-435	P/EX-435
REX-V/x-315	RSS/EX-560	RS/EX-560	RSA/EX-560	P/EX-560
REX-V/x-355	RSS/EX-560	RS/EX-560	RSA/EX-560	P/EX-560
REX-V/x-400	RSS/EX-560	RS/EX-560	RSA/EX-560	P/EX-560
REX-V/x-450	RSS/EX-710	RS/EX-710	RSA/EX-710	P/EX-710
REX-V/x-500	RSS/EX-710	RS/EX-710	RSA/EX-710	P/EX-710
REX-V/x-560	RSS/EX-710	RS/EX-710	RSA/EX-710	P/EX-710
REX-V/x-630	RSS/EX-900	RS/EX-900	RSA/EX-900	P/EX-900
REX-V/x-710	RSS/EX-900	RS/EX-900	RSA/EX-900	P/EX-900
REX-V/x-800	RSS/EX-1100	RS/EX-1100	RSA/EX-1100	P/EX-1100



1	6	7	8
type	backflow preventer KZD/EX	zconnector anti-vibration ZPDO/EX	stub pipe K/EX
REX-V/x-190	KZD/EX-435	ZPDO/EX-435	K/EX-435
REX-V/x-220	KZD/EX-435	ZPDO/EX-435	K/EX-435
REX-V/x-250	KZD/EX-435	ZPDO/EX-435	K/EX-435
REX-V/x-280	KZD/EX-435	ZPDO/EX-435	K/EX-435
REX-V/x-315	KZD/EX-560	ZPDO/EX-560	K/EX-560
REX-V/x-355	KZD/EX-560	ZPDO/EX-560	K/EX-560
REX-V/x-400	KZD/EX-560	ZPDO/EX-560	K/EX-560
REX-V/x-450	KZD/EX-710	ZPDO/EX-710	K/EX-710
REX-V/x-500	KZD/EX-710	ZPDO/EX-710	K/EX-710
REX-V/x-560	KZD/EX-710	ZPDO/EX-710	K/EX-710
REX-V/x-630	KZD/EX-900	ZPDO/EX-900	K/EX-900
REX-V/x-710	KZD/EX-900	ZPDO/EX-900	K/EX-900
REX-V/x-800	KZD/EX-1100	ZPDO/EX-1100	K/EX-1100

Article numbers

43527601	RSS/EX-435	43527621	RSA/EX-435	43527631	P/EX-435	43527641	KZD/EX-435	43527651	ZPDO/EX-435	43527661	K/EX-435
43527602	RSS/EX-560	43527622	RSA/EX-560	43527632	P/EX-560	43527642	KZD/EX-560	43527652	ZPDO/EX-560	43527662	K/EX-560
43527603	RSS/EX-710	43527623	RSA/EX-710	43527633	P/EX-710	43527643	KZD/EX-710	43527653	ZPDO/EX-710	43527663	K/EX-710
43527604	RSS/EX-900	43527624	RSA/EX-900	43527634	P/EX-900	43527644	KZD/EX-900	43527654	ZPDO/EX-900	43527664	K/EX-900
43527605	RSS/EX-1100	43527625	RSA/EX-1100	43527635	P/EX-1100	43527645	KZD/EX-1100	43527655	ZPDO/EX-1100	43527665	K/EX-1100
43527611	RS/EX-435										
43527612	RS/EX-560										
43527613	RS/EX-710										
43527614	RS/EX-900										
43527615	RS/EX-1100										

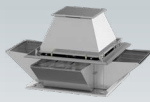


ELECTRICAL ACCESSORIES



type	inverter L	switch PTC	service switch	contactor
2-POLE MOTORS				
REX-V/2-190-012T 2G	-	U-EK230	R-S 3-F + SP, 16A	DILM7-10(230V50HZ)
REX-V/2-190-012T 2G VFD	L 0,4 kW	U-EK230	R-S 3-F + SP, 16A	DILM7-10(230V50HZ)
REX-V/2-190-012T 2GD VFD	L 0,4 kW	U-EK230	R-S 3-F + SP, 16A	DILM7-10(230V50HZ)
REX-V/2-220-018T 2G	-	U-EK230	R-S 3-F + SP, 16A	DILM7-10(230V50HZ)
REX-V/2-220-018T 2G VFD	L 0,4 kW	U-EK230	R-S 3-F + SP, 16A	DILM7-10(230V50HZ)
REX-V/2-220-018T 2GD VFD	L 0,4 kW	U-EK230	R-S 3-F + SP, 16A	DILM7-10(230V50HZ)
REX-V/2-280(250)-025T 2G	-	U-EK230	R-S 3-F + SP, 16A	DILM7-10(230V50HZ)
REX-V/2-280(250)-025T 2G VFD	L 0,4 kW	U-EK230	R-S 3-F + SP, 16A	DILM7-10(230V50HZ)
REX-V/2-280(250)-025T 2GD VFD	L 0,4 kW	U-EK230	R-S 3-F + SP, 16A	DILM7-10(230V50HZ)
4-POLE MOTORS				
REX-V/4-190-006T 2G	-	U-EK230	R-S 3-F + SP, 16A	DILM7-10(230V50HZ)
REX-V/4-190-012T 2G VFD	L 0,4 kW	U-EK230	R-S 3-F + SP, 16A	DILM7-10(230V50HZ)
REX-V/4-190-012T 2GD VFD	L 0,4 kW	U-EK230	R-S 3-F + SP, 16A	DILM7-10(230V50HZ)
REX-V/4-220-006T 2G	-	U-EK230	R-S 3-F + SP, 16A	DILM7-10(230V50HZ)
REX-V/4-220-012T 2G VFD	L 0,4 kW	U-EK230	R-S 3-F + SP, 16A	DILM7-10(230V50HZ)
REX-V/4-220-012T 2GD VFD	L 0,4 kW	U-EK230	R-S 3-F + SP, 16A	DILM7-10(230V50HZ)
REX-V/4-250-018T 2G	-	U-EK230	R-S 3-F + SP, 16A	DILM7-10(230V50HZ)
REX-V/4-250-018T 2G VFD	L 0,4 kW	U-EK230	R-S 3-F + SP, 16A	DILM7-10(230V50HZ)
REX-V/4-250-018T 2GD VFD	L 0,4 kW	U-EK230	R-S 3-F + SP, 16A	DILM7-10(230V50HZ)
REX-V/4-280-025T 2G	-	U-EK230	R-S 3-F + SP, 16A	DILM7-10(230V50HZ)
REX-V/4-280-025T 2G VFD	L 0,4 kW	U-EK230	R-S 3-F + SP, 16A	DILM7-10(230V50HZ)
REX-V/4-280-025T 2GD VFD	L 0,4 kW	U-EK230	R-S 3-F + SP, 16A	DILM7-10(230V50HZ)
REX-V/4-315-037T 2G	-	U-EK230	R-S 3-F + SP, 16A	DILM7-10(230V50HZ)
REX-V/4-315-037T 2G VFD	L 0,4 kW	U-EK230	R-S 3-F + SP, 16A	DILM7-10(230V50HZ)
REX-V/4-315-037T 2GD VFD	L 0,4 kW	U-EK230	R-S 3-F + SP, 16A	DILM7-10(230V50HZ)
REX-V/4-355-055T 2G	-	U-EK230	R-S 3-F + SP, 16A	DILM7-10(230V50HZ)
REX-V/4-355-055T 2G VFD	L 0,75 kW	U-EK230	R-S 3-F + SP, 16A	DILM7-10(230V50HZ)
REX-V/4-355-055T 2GD VFD	L 0,75 kW	U-EK230	R-S 3-F + SP, 16A	DILM7-10(230V50HZ)
REX-V/4-400-075T 2G	-	U-EK230	R-S 3-F + SP, 16A	DILM7-10(230V50HZ)
REX-V/4-400-075T 2G VFD	L 0,75 kW	U-EK230	R-S 3-F + SP, 16A	DILM7-10(230V50HZ)
REX-V/4-400-075T 2GD VFD	L 0,75 kW	U-EK230	R-S 3-F + SP, 16A	DILM7-10(230V50HZ)
REX-V/4-450-110T 2G	-	U-EK230	R-S 3-F + SP, 16A	DILM7-10(230V50HZ)
REX-V/4-450-110T 2G VFD	L 1,5 kW	U-EK230	R-S 3-F + SP, 16A	DILM7-10(230V50HZ)
REX-V/4-450-110T 2GD VFD	L 1,5 kW	U-EK230	R-S 3-F + SP, 16A	DILM7-10(230V50HZ)
REX-V/4-500-220T 2G	-	U-EK230	R-S 3-F + SP, 16A	DILM7-10(230V50HZ)
REX-V/4-500-220T 2G VFD	L 2,2 kW	U-EK230	R-S 3-F + SP, 16A	DILM7-10(230V50HZ)
REX-V/4-500-220T 2GD VFD	L 2,2 kW	U-EK230	R-S 3-F + SP, 16A	DILM7-10(230V50HZ)
REX-V/4-560-300T 2G	-	U-EK230	R-S 3-F + SP, 16A	DILM7-10(230V50HZ)
REX-V/4-560-300T 2G VFD	L 3 kW	U-EK230	R-S 3-F + SP, 16A	DILM7-10(230V50HZ)
REX-V/4-560-300T 2GD VFD	L 3 kW	U-EK230	R-S 3-F + SP, 16A	DILM7-10(230V50HZ)

* equipment for the safe zone, execution for the ATEX zone consult with the Technical Department of Venture Industries Sp. z o.o.



ELECTRICAL ACCESSORIES

type	inverter L	switch PTC	service switch	contactor
6-POLE MOTORS				
REX-V/6-250-018T 2G	-	U-EK230	R-S 3-F + SP, 16A	DILM7-10(230V50HZ)
REX-V/6-250-012T 2G VFD	L 0,4 kW	U-EK230	R-S 3-F + SP, 16A	DILM7-10(230V50HZ)
REX-V/6-250-012T 2GD VFD	L 0,4 kW	U-EK230	R-S 3-F + SP, 16A	DILM7-10(230V50HZ)
REX-V/6-280-018T 2G	-	U-EK230	R-S 3-F + SP, 16A	DILM7-10(230V50HZ)
REX-V/6-280-012T 2G VFD	L 0,4 kW	U-EK230	R-S 3-F + SP, 16A	DILM7-10(230V50HZ)
REX-V/6-280-012T 2GD VFD	L 0,4 kW	U-EK230	R-S 3-F + SP, 16A	DILM7-10(230V50HZ)
REX-V/6-315-018T 2G	-	U-EK230	R-S 3-F + SP, 16A	DILM7-10(230V50HZ)
REX-V/6-315-012T 2G VFD	L 0,4 kW	U-EK230	R-S 3-F + SP, 16A	DILM7-10(230V50HZ)
REX-V/6-315-012T 2GD VFD	L 0,4 kW	U-EK230	R-S 3-F + SP, 16A	DILM7-10(230V50HZ)
REX-V/6-355-018T 2G	-	U-EK230	R-S 3-F + SP, 16A	DILM7-10(230V50HZ)
REX-V/6-355-018T 2G VFD	L 0,4 kW	U-EK230	R-S 3-F + SP, 16A	DILM7-10(230V50HZ)
REX-V/6-355-018T 2GD VFD	L 0,4 kW	U-EK230	R-S 3-F + SP, 16A	DILM7-10(230V50HZ)
REX-V/6-400-025T 2G	-	U-EK230	R-S 3-F + SP, 16A	DILM7-10(230V50HZ)
REX-V/6-400-025T 2G VFD	L 0,4 kW	U-EK230	R-S 3-F + SP, 16A	DILM7-10(230V50HZ)
REX-V/6-400-025T 2GD VFD	L 0,4 kW	U-EK230	R-S 3-F + SP, 16A	DILM7-10(230V50HZ)
REX-V/6-450-037T 2G	-	U-EK230	R-S 3-F + SP, 16A	DILM7-10(230V50HZ)
REX-V/6-450-037T 2G VFD	L 0,4 kW	U-EK230	R-S 3-F + SP, 16A	DILM7-10(230V50HZ)
REX-V/6-450-037T 2GD VFD	L 0,4 kW	U-EK230	R-S 3-F + SP, 16A	DILM7-10(230V50HZ)
REX-V/6-500-075T 2G	-	U-EK230	R-S 3-F + SP, 16A	DILM7-10(230V50HZ)
REX-V/6-500-075T 2G VFD	L 0,75 kW	U-EK230	R-S 3-F + SP, 16A	DILM7-10(230V50HZ)
REX-V/6-500-075T 2GD VFD	L 0,75 kW	U-EK230	R-S 3-F + SP, 16A	DILM7-10(230V50HZ)
REX-V/6-560-110T 2G	-	U-EK230	R-S 3-F + SP, 16A	DILM7-10(230V50HZ)
REX-V/6-560-110T 2G VFD	L 1,5 kW	U-EK230	R-S 3-F + SP, 16A	DILM7-10(230V50HZ)
REX-V/6-560-110T 2GD VFD	L 1,5 kW	U-EK230	R-S 3-F + SP, 16A	DILM7-10(230V50HZ)
REX-V/6-630-220T 2G	-	U-EK230	R-S 3-F + SP, 16A	DILM7-10(230V50HZ)
REX-V/6-630-220T 2G VFD	L 2,2 kW	U-EK230	R-S 3-F + SP, 16A	DILM7-10(230V50HZ)
REX-V/6-630-220T 2GD VFD	L 2,2 kW	U-EK230	R-S 3-F + SP, 16A	DILM7-10(230V50HZ)
REX-V/6-710-300T 2G	-	U-EK230	R-S 3-F + SP, 16A	DILM7-10(230V50HZ)
REX-V/6-710-300T 2G VFD	L 4,0 kW	U-EK230	R-S 3-F + SP, 16A	DILM7-10(230V50HZ)
REX-V/6-710-300T 2GD VFD	L 4,0 kW	U-EK230	R-S 3-F + SP, 16A	DILM7-10(230V50HZ)
REX-V/6-800-550T 2G	-	U-EK230	R-S 3-F + SP, 25A	DILM12-10(230V50HZ)
REX-V/6-800-550T 2G VFD	L 5,5 kW	U-EK230	R-S 3-F + SP, 25A	DILM12-10(230V50HZ)
REX-V/6-800-550T 2GD VFD	L 5,5 kW	U-EK230	R-S 3-F + SP, 25A	DILM12-10(230V50HZ)

* equipment for the safe zone, execution for the ATEX zone consult with the Technical Department of Venture Industries Sp. z o.o.