



APPLICATION

The high pressure and efficiency achieved allow these fans to be used in all types of general ventilation installations. The compact design makes these fans all the benefits of axial fans in excess of their performance. This allows you to overcome the high resistance of small diameter channel installations and seamlessly work with filters and duct heaters.

Exemplary applications include supply and exhaust ventilation of flats, offices, shops, catering facilities, cooperation with domestic kitchen hoods equipped with grease filters, etc.

CONSTRUCTION

Duct fan designed for low-dust room ventilation, suitable for vertical or horizontal installation in ventilation ducts with diameters from 100 to 400 mm. Unique design allows for high pressures and performance with minimum noise level. The original design allows maintenance without dismantling ventilation ducts. The two-stage TDx2 models consist of two single-stage TD modules on a common mounting frame to achieve almost double the higher pressures compared to single-stage models. The TDx2 is available in standard diameters from 125 to 250 mm. The model casing 160, 250, 350, 500, 800 is made of polypropylene. Model 1000, 1300, 2000, 4000, 6000 enclosures are made of epoxy-coated steel sheet. The rotors of models 1000, 1300, 2000, 4000, 6000 are made of aluminum sheet, whereas 160, 250, 350, 500, 800, 800N of plastic ABS.

MOTOR

TD fans are equipped with a single-phase (220-240V, 50Hz), squirrel cage induction motors (models 160, 250, 350) and phase (220-240V, 50Hz), with an external rotor (Models 500, 800, 1000, 1300, 2000, 4000, 6000), in accordance with UNE 20-113 and IEC 34-1 standards. The 160-2000 models have protection rating IP 44 and winding insulation class B, models 4000 and 6000 have IP 54 rating and winding insulation class F.

The motors are equipped with ball bearings. All motors are designed for voltage-controlled speed control. Fans of sizes 160 to 2000 are equipped as standard with two speed engines designed for two speeds. All motors have thermal overload protection - fuses on models 160, 250 and 350 and automatic fuses on other models.



WWW



DTR



CE

DESIGNATION

TD	x2	-	800	/	200	N
1			2		3	4

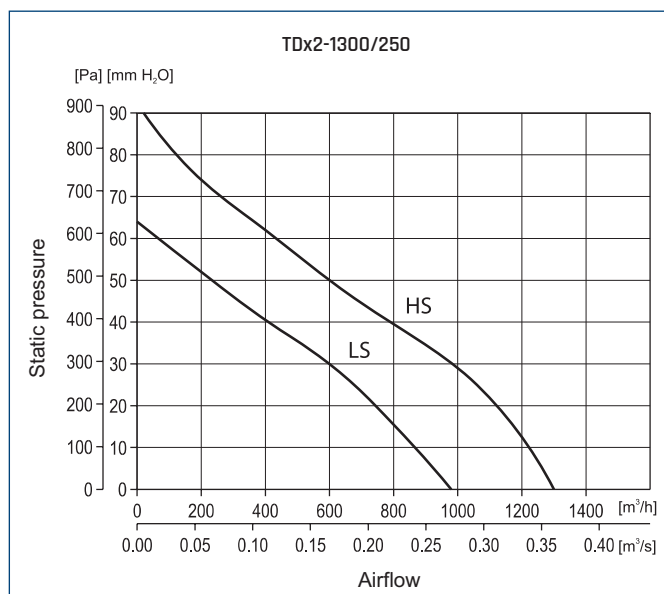
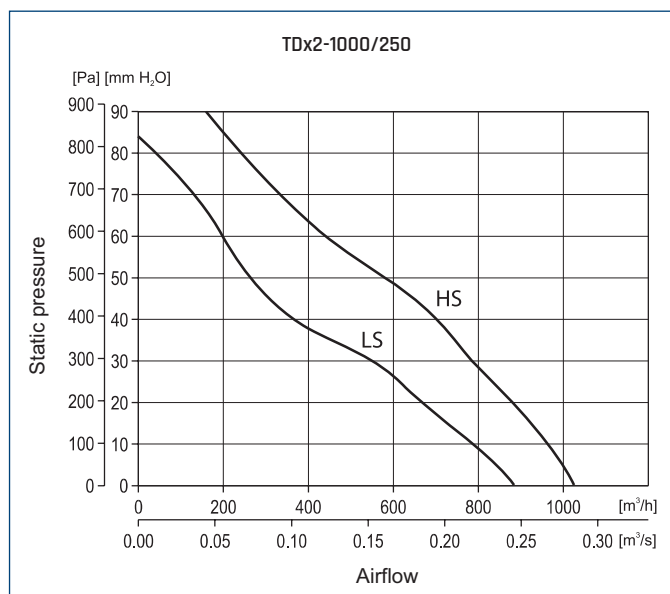
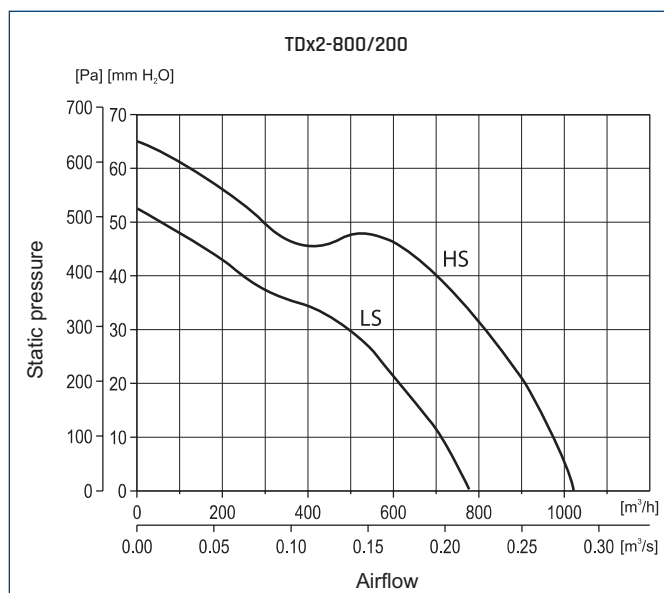
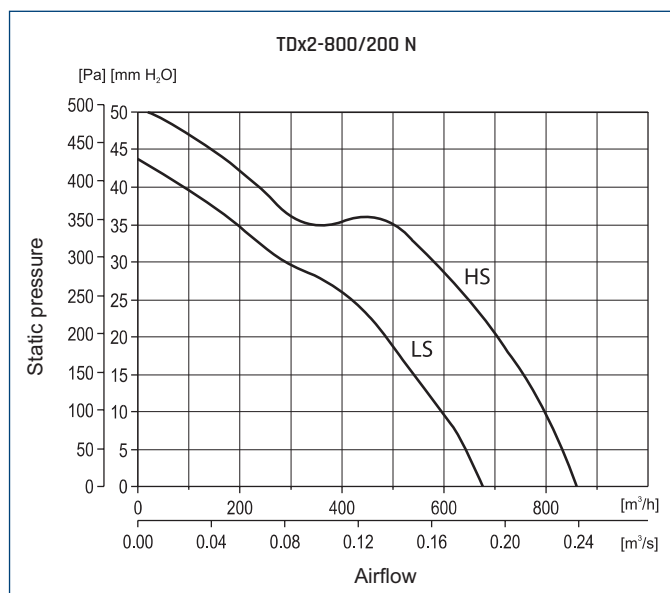
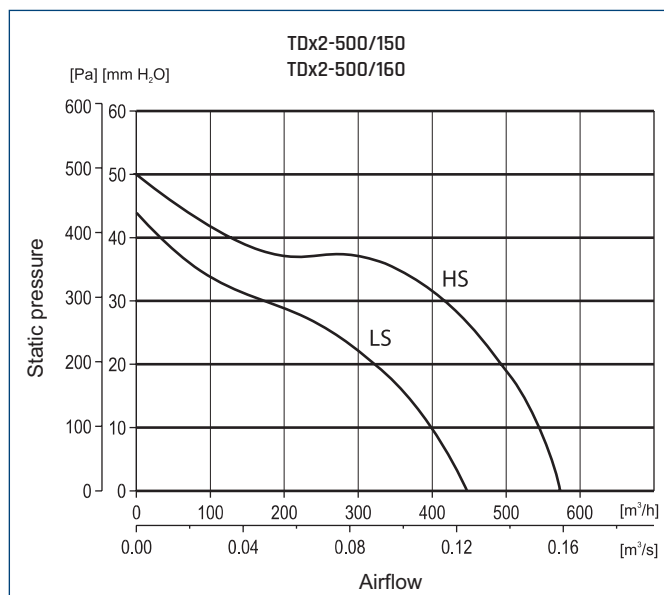
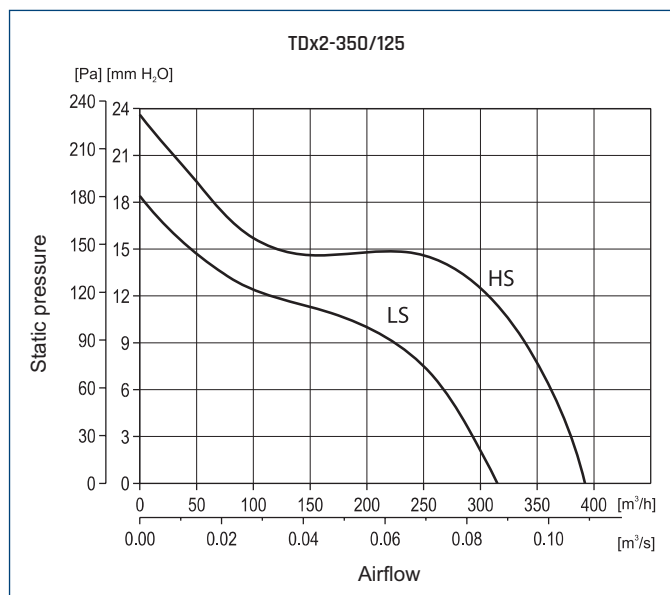
1. Name
2. Model
3. Nominal diameter
4. Version

TECHNICAL CHARACTERISTICS

Type	run	speed	maximum absorbed power	maximum absorbed current	airflow at free discharge	sound pressure level*	operating temp. max	weight	regulator	article number
		[r.p.m.]	[W]	[A]	[m ³ /h]	[dB(A)]				
TDx2-350/125	HS	2250	60	0,26	395	36	40	5,4	TLR 15 DS	40020731
	LS	1900	44	0,20	320	31				
TDx2-500/150	HS	2500	100	0,44	580	48	60	5,0	TLR 15 DS	40020746
TDx2-500/160	LS	1950	88	0,38	475	41				40020741
TDx2-800/200 N	HS	2780	140	0,60	880	48	60	8,7	TLR 15 DS	40020761
	LS	2480	120	0,52	690	44				
TDx2-800/200	HS	2500	240	1,00	1020	52	60	8,7	TLR 25 DS	40020751
	LS	2000	200	0,90	790	48				
TDx2-1000/250	HS	2800	250	1,00	1020	57	60	18,7	TLR 25 DS	40020771
	LS	2610	170	0,70	900	51				
TDx2-1300/250	HS	2520	360	1,60	1320	57	60	18,7	TLR 25 DS	40020781
	LS	2000	280	1,20	980	52				

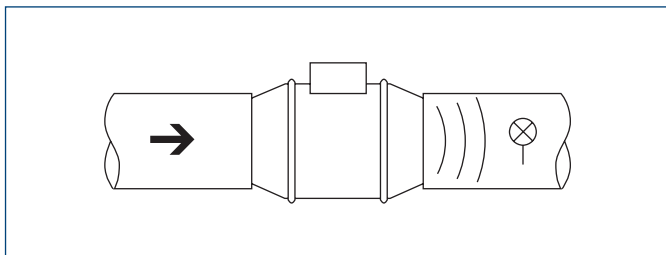
* measured at a distance of 3 m from the fan.

PERFORMANCE CURVES



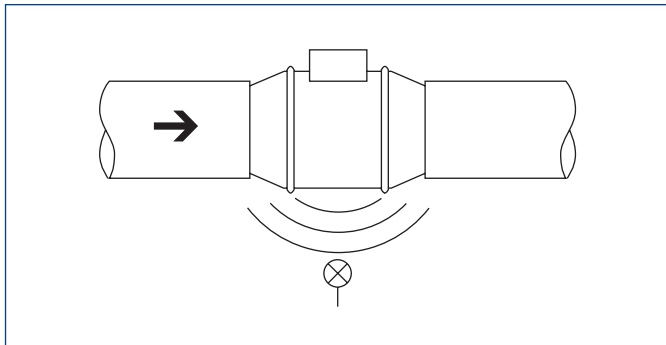
ACOUSTIC CHARACTERISTICS

Sound power level [dB (A)] measured in the channel from the fan inlet side for higher speed.



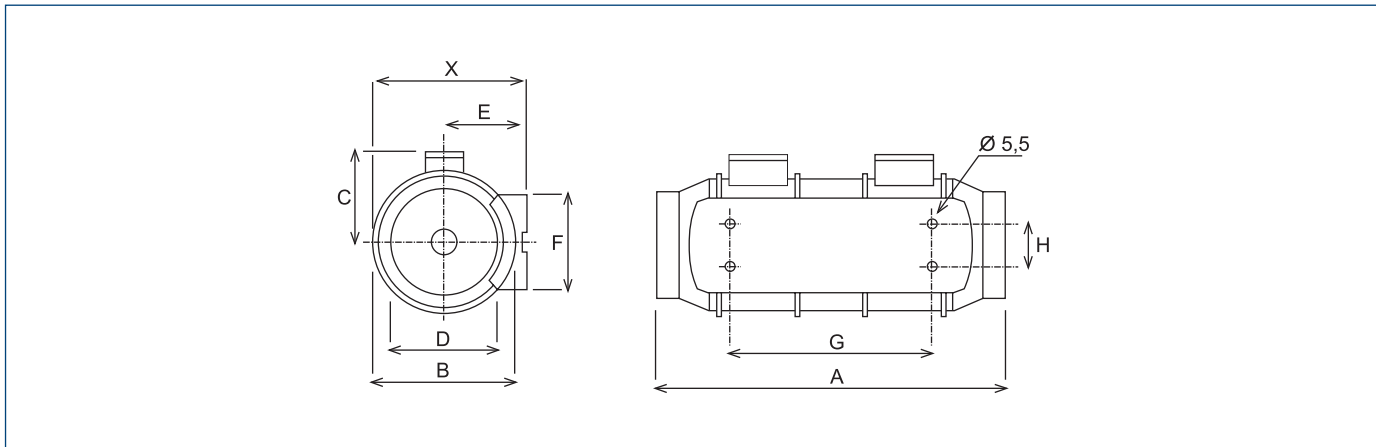
Frequency Hz/dB(A)	63	125	250	500	1000	2000	4000	8000
TDx2-350/125	41	53	52	59	60	56	47	39
TDx2-500/150	38	41	61	63	65	68	62	54
TDx2-500/160	38	41	61	63	65	68	62	54
TDx2-800/200 N	43	48	68	70	72	70	66	58
TDx2-800/200	43	53	67	69	74	73	70	60
TDx2-1000/250	41	51	64	72	78	75	68	60
TDx2-1300/250	43	58	70	73	81	79	72	67

Sound power level [dB (A)] measured outside the channel for higher rotational speed.



Frequency Hz/dB(A)	63	125	250	500	1000	2000	4000	8000
TDx2-350/125	39	52	52	53	53	51	39	30
TDx2-500/150	31	38	49	45	50	59	48	35
TDx2-500/160	31	38	49	45	50	59	48	35
TDx2-800/200 N	32	38	54	53	58	59	50	37
TDx2-800/200	35	42	53	52	60	63	54	39
TDx2-1000/250	29	40	50	52	64	63	52	49
TDx2-1300/250	28	42	45	53	66	65	58	53

DIMENSIONS [mm]



Type	X	A	ØB	C	ØD	E	F	G	H
TDx2-350/125	188,0	417	176	115	123	100,0	90	253	60
TDx2-500/150	212,5	464	200	127	147	111,5	130	249	60
TDx2-500/160	212,5	444	200	127	147	111,5	130	249	60
TDx2-800/200	232,5	500	217	141	198	124,0	140	298	94
TDx2-1000/250	291,0	654	272	192	248	155,0	168	416	145
TDx2-1300/250	291,0	654	272	192	248	155,0	168	416	145